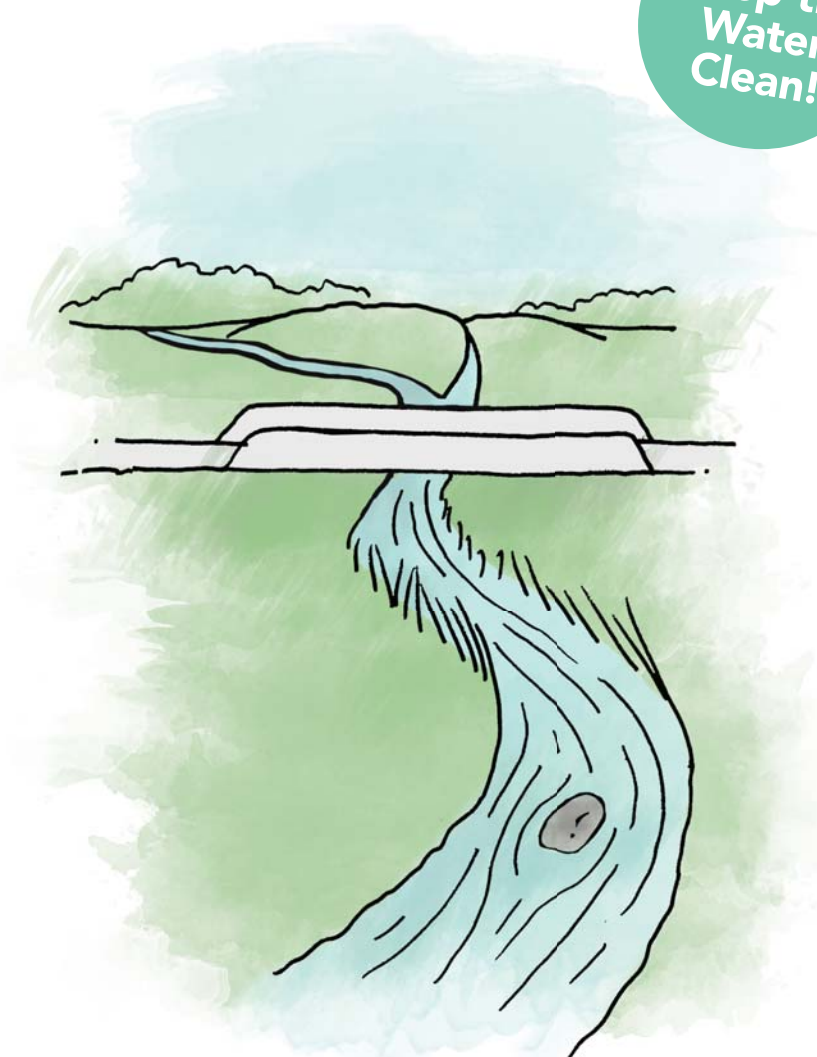


Urban WATERSHEDS

Keep the
Water
Clean!



Papillion - La Vista
Stormwater Outreach



What is a watershed?

A watershed is an area of land where runoff from rain and snow ultimately drain to a particular stream, river, wetland, or other body of water.

In urban areas, vegetation is removed in favor of paved areas. This means there are large quantities of surfaces that keep rainwater from seeping into the soil.

WAYS TO PROTECT WATERSHEDS:

- Reduce fertilizer use — if you must, use no or low-phosphorus fertilizers.
- Capture and reuse rainwater using a rain barrel.
- Dispose of pet waste properly.
- Recycle or dispose of household chemicals properly in city approved facilities - not down the drain.
- Plant native wildflowers and grasses.
- Wash your car at a car wash, not your driveway.

For more information visit:
omahastormwater.org
papiopartnership.org
cityoflavista.org/thompsoncreek

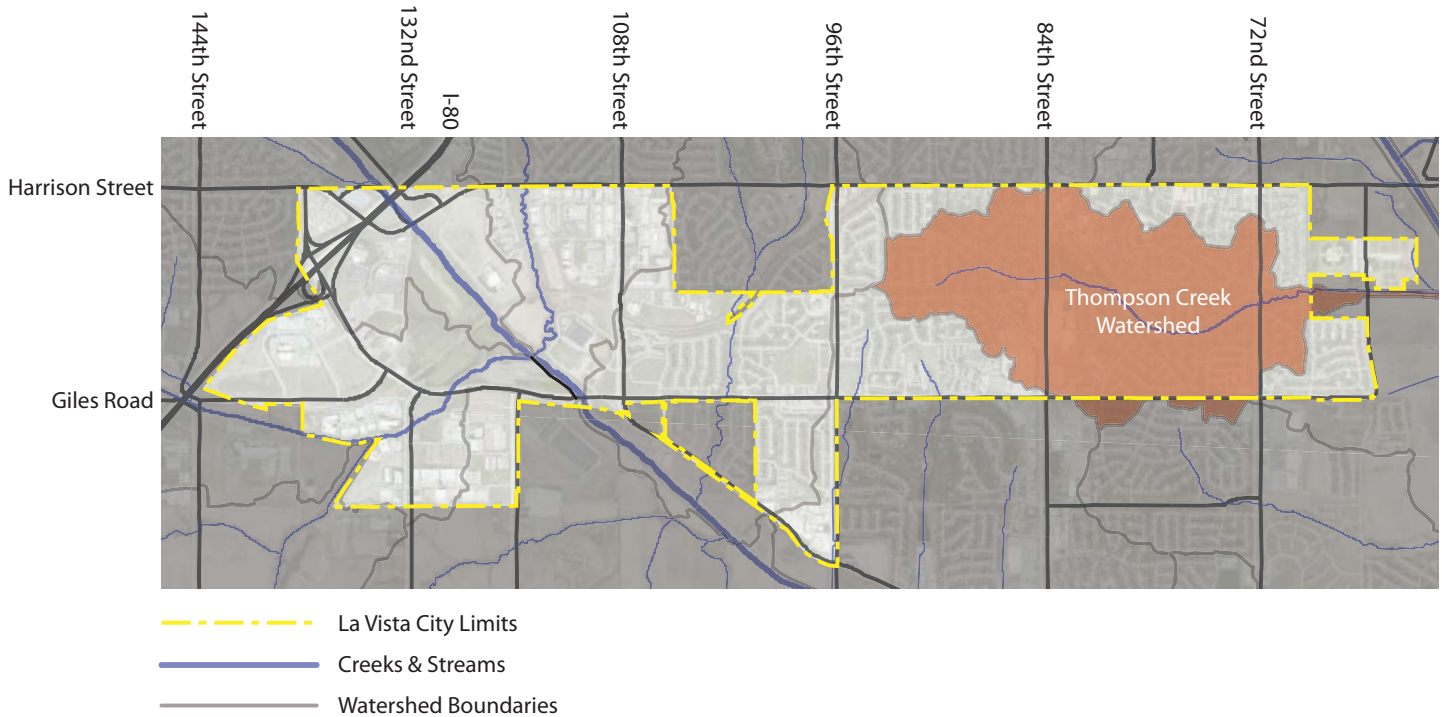




Thompson Creek Watershed Restoration

The Thompson Creek Watershed Restoration Project has the following goals:

- **Improve water quality** in Thompson Creek and downstream receiving waters by:
 - Improving stormwater management throughout the watershed.
 - Reducing erosion of the creek channel.
- **Improve the creek environment** by:
 - Improving water quality;
 - Re-meandering the channel;
 - Stabilizing stream banks;
 - Constructing pools and riffles and other unique stream flows;
 - Reconstructing a floodplain bench.
- **Reduce flooding and damage to infrastructure and public and private property** by:
 - Reducing stormwater runoff throughout the watershed;
 - Reconstructing the creek and floodplain.
- **Create public support for the project & its goals** by:
 - Increasing awareness of individual property contributions to stormwater pollution;
 - Increasing understanding of linkages between stormwater runoff, water quality, and stream health;
 - Implementing cooperative projects to demonstrate cost-effective means of improving stream health.



Where you can find more information

City of La Vista website for Thompson Creek information
www.cityoflavista.org/thompsoncreek



Funding for this insert was supplied by: the City of La Vista, Nebraska Department of Environmental Quality, the Nebraska Environmental Trust, and the Papio-Missouri River Natural Resource District.